



STRATEGIES FOR ELECTRICITY IN GREATER MALE'

COMPANY PROFILE



STELCO is a government owned utility that provides power, water and sewerage services.

STELCO provides power in 35 islands in Kaafu, Vaavu, Alif Alif and Alif Dhaal atolls, including the greater Male' area.

Total installed Diesel Generator capacity	184 MW
Total installed Solar Capacity (STELCO)	601 kW
No of islands under STELCO	35



STELCO STRAGTEGIES FOR GREATER MALE'



- *Currently Male' and Hulhumale' are interconnected.*
- *Airport has also been connected into the STELCO grid and gets power from STELCO.*

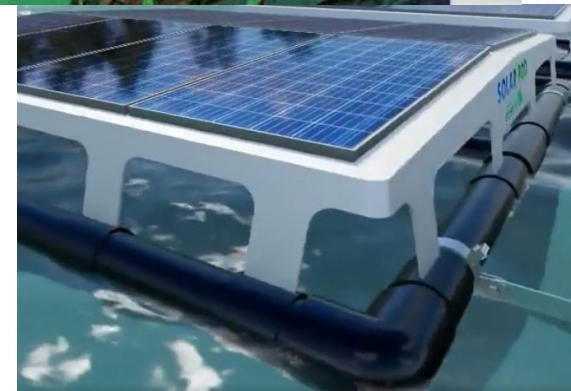
Our current Power plan for this region is as follows

- Interconnect all 5 islands in the Greater Male' area.
- Operating the Gensets in standby mode in Villingili once the interconnection of all 5 islands is complete.
- Establish large power generation facilities in either Thilafushi or Gulhifalhu
- Install Solar energy units in Thilafushi and Gulhifalhu
- Ensure that power generation facilities are established on par with the demand
- Where feasible, establish renewable energy generation technologies.

RENEWABLE ENERGY PLAN

STELCO's long term goals include increasing the renewable energy contribution in our grid. As part of these goals, STELCO has carried out multiple solar projects including

- Installing solar panels in all STELCO managed and owned powerhouses
- Green life initiative program
- Floating solar project in Adh Kunburudhoo (2021)
- Research and Development works in other forms of renewable energy technologies
- 40% solar energy project (ongoing)



RENEWABLE ENERGY PLAN



- STELCO has also done Renewable energy projects under PPA.
- These include 1.5 MW solar in Hulhumale and 294 kWp in Villingili.
- In total STELCO has 8 different PPA contracts that total upto 2.2 MW of installed solar capacity.

PPA rate and Price trends



Current PPA rate for solar projects is 10 cents per kWh.

Electricity rates are fixed by the government and these values (in USD) are;

Band (30 days)	Greater Male' Region			Outer islands		
	Domestic	Commercial	Gov/ Institutes	Domestic	Commercial	Gov/ Institutes
0 – 100 Units	0.10	0.21	0.21	0.10	0.21	0.29
101 – 200 Units	0.11	0.22	0.22	0.11	0.24	0.37
201 – 300 Units	0.14	0.24	0.22	0.14	0.31	0.42
301 – 400 Units	0.16	0.26	0.24	0.16	0.39	0.49
401 – 500 Units	0.19	0.28	0.24	0.19	0.39	0.49
501 – 600 Units	0.23	0.37	0.26	0.23	0.39	0.49
600 Units >	0.28	0.43	0.28	0.28	0.39	0.49



Thank You